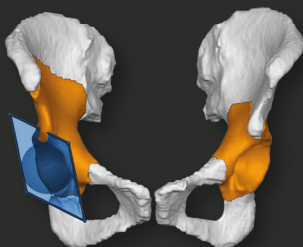




**MEET US FOR INNOVATIVE
SOLUTIONS AND LUNCH!
FRIDAY OCT 28, 1 - 2 PM
DKOU, ROOM LINDAU 3**

- ✓ MEET INCREASING DEMAND
- ✓ DELIVER FASTER
- ✓ IMPROVE PATIENT CARE



1000
shapes[®]
1000SHAPES.COM

Shaping Orthopedics - The Potential of Population-based 3D Modeling

Find out how **B. Braun Gruppe, Tactile Orthopaedics, Osgenic, Simq GmbH and 1000shapes** help to improve the individual patient care in orthopedics, with the potential of population-based 3D-modeling, simulations, digital and physical anatomical training models, digital surgery planning and how clinical partners as **CHARITÉ UNIVERSITÄTSMEDIZIN BERLIN** support us in our vision!

Free lunch bag included ...

Shaping Orthopedics - The Potential of Population-based 3D Modeling

Friday, 1 - 2 pm room Lindau 3

AGENDA:

FULL
LECTURE
ABSTRACTS



„Advantages of a SSMs for defect classification and the development of pre-clinical test-setups“
(Dr. Ronja A. Schierjott-Hermle, Aesculap AG)



„Creating surgical 3D anatomy from scratch - what and why?“
(Arne Schlenzka, MD, Osgenic)



„Adding the Tactile into orthopaedic surgical training“
(Carolyn Anglin, PhD, Tactile Orthopaedics)



„Digital Verification of Custom Implants using Numerical Simulation“
(Jan Hertwig, CEO, SimQ)



„3D reconstruction of the pelvis from a single planar x-ray“
(Dr. Ole Höpfner, 1000shapes GmbH)



„3D-Atlas based identification of implants on planar x-rays“
(Dr. Stefanie Donner, Berlin Institute of Health at Charité)

You want to meet us or one of our speakers after the DKOU?
You like to find out more about innovative solutions?
Get in touch with us: **info@1000shapes.com**